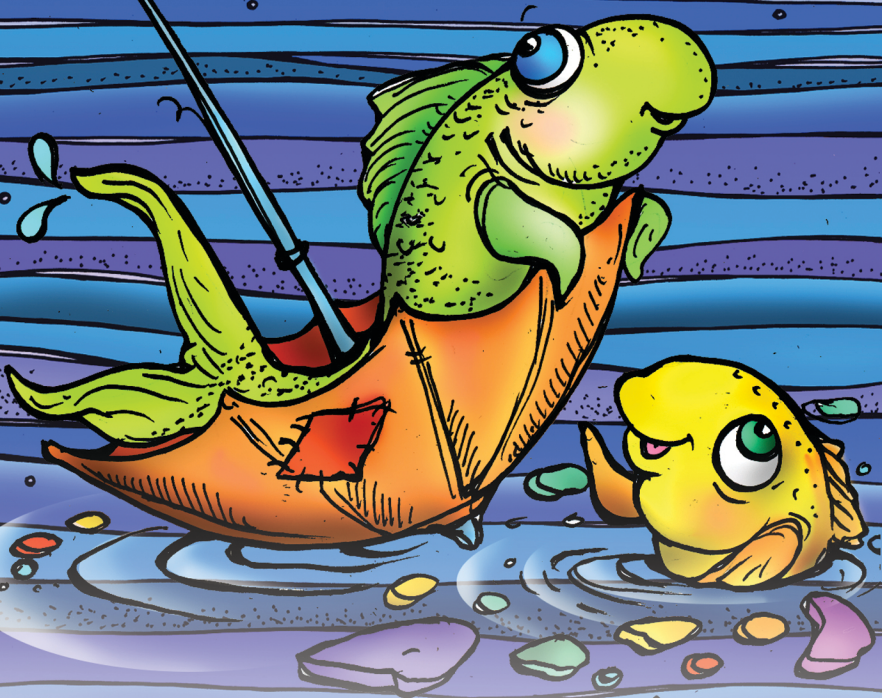


Reading Between the Lines:  
**Marine Debris**  
**Education Program**  
 Activity sheets





# Table of Contents

## 2. Marine Debris Word Search

## 3. Word Search Vocabulary

## 4. Marine Debris Scramble

## 5. Picture Crossword

## 6. Secret Code

## 7. Make Your Own Recycled Bird Feeder

## 8. Answer Key

For more great activities and information  
on what you can do to prevent marine debris, visit

**[www.marinedebris.noaa.gov](http://www.marinedebris.noaa.gov)**

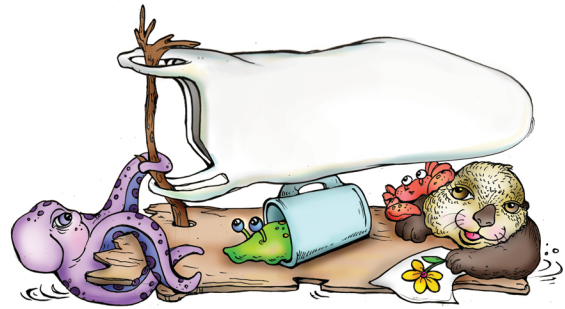
This activity booklet was produced by the University of Georgia Marine Extension Service and Georgia Sea Grant with funding from the Southeast Atlantic Marine Debris Initiative. Some of the activities were developed by the National Oceanic and Atmospheric Administration (NOAA)

Marine Debris Program under NOAA contract number AB133F06CN0193 by

Sheavly Consultants, Virginia Beach, Virginia.

# Marine Debris Word Search

Marine debris is human-made trash that ends up in rivers, streams and oceans. Marine debris is dangerous to wildlife and the environment because animals can mistake it for food or become tangled in it. Marine debris affects people too, whether we are boating, fishing, swimming or simply enjoying a day at the beach.



C E N I A R D M R O T S S E N  
U G C S E L D A T A B R U E C  
N Y V U M R E R C T S E N Y V  
I R S R D I H I E M C C I R S  
T E E R A E S N R D B Y T E E  
N O I T A V R E S N O C N O I  
R E D A R G E D O I B L R E D  
R S D M A T T E E I R E R S D  
N U P A R H A B I T A T N U P  
R T A N S I W R G U H D R T A  
R P O L L U T I O N G E R P O  
T I D U P L A S T I C U T I D  
S E N I A R D M R R T S S E N  
U G C S E L D A T A B R U G C  
N Y V U M R E R C T S E N Y V

## Words to Find:

*Hint: wind and ocean currents move trash in all directions, so look for words everywhere—even backwards!*

HABITAT  
MARINE DEBRIS  
REDUCE  
STORM DRAIN  
WATERSHED  
REUSE

POLLUTION  
BIODEGRADE  
CONSERVATION  
GYRE  
PLASTIC  
RECYCLE



(Answers on page 8)

# Word Search Vocabulary

**Biodegrade** – to break down into natural elements by some biological process

**Conservation** – to preserve or protect natural resources

**Gyre** – a large area of rotating ocean currents

**Habitat** – the natural home of an animal, plant, etc.

**Marine Debris** – human-made trash that ends up in rivers, streams and oceans

**Plastic** – various types of non-metallic material made by a synthetic process called polymerization

**Pollution** – the introduction of contaminants into a natural environment

**Recycle** – to process used materials into new, useful products

**Reduce** – to lessen in any way

**Reuse** – to use an item again in the same way or for a different purpose

**Storm Drain** – an inlet designed to remove excess water from paved areas such as streets or parking lots

**Watershed** – an area of land from which surface water converges into a single water body such as a river, lake or estuary



# Marine Debris Scramble

YRFATSMOM PSUC


IHFGNSI NLEI


DNCYA SPRWAPRE


TLPCISA ASGB


LMUIEH NOLABSOL


OLTBET PSCA


REBGEAEV SNAC



## Instructions:

**Unscramble each of the clue words. To find out the hidden message, copy the letters in the numbered cells to the squares below with the same number.**

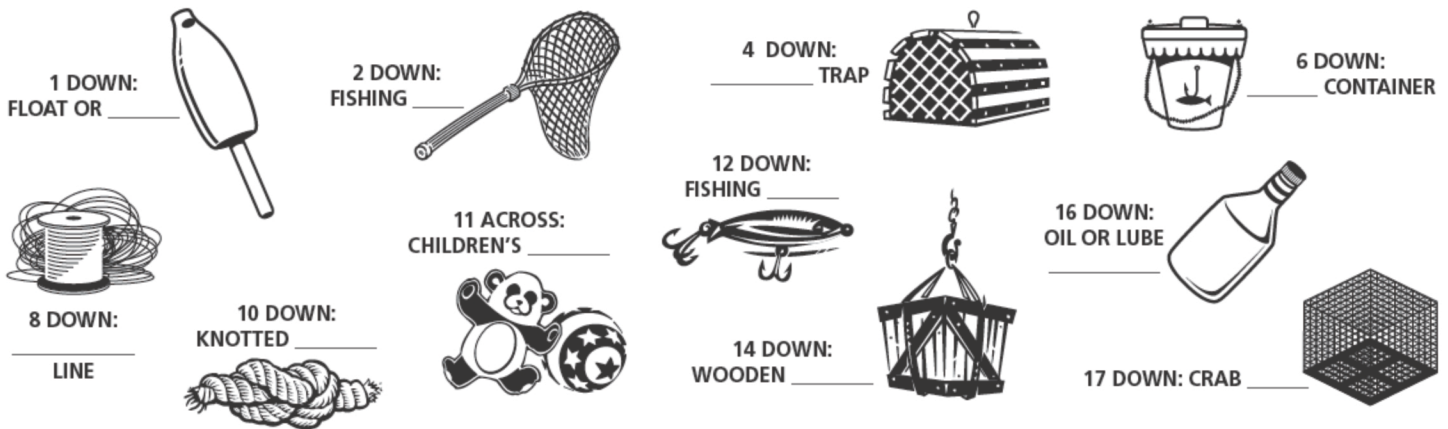
- PLASTIC BAGS
- BOTTLE CAPS
- FISHING LINE
- BEVERAGE CANS
- STYROFOAM CUPS
- CANDY WRAPPERS
- HELIUM BALLOONS



(Answers on page 8)



# Types of Marine Debris

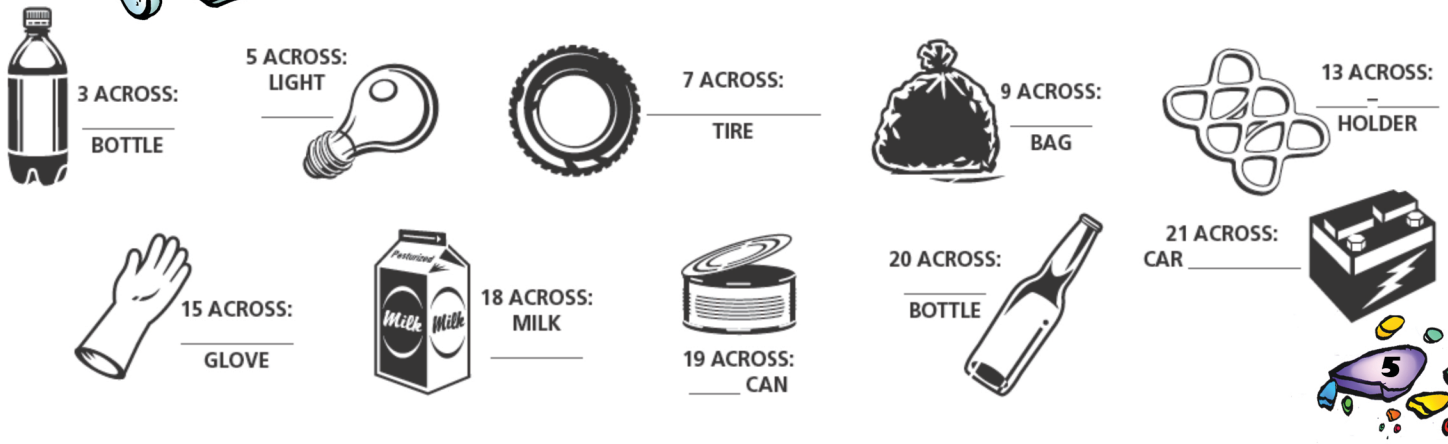
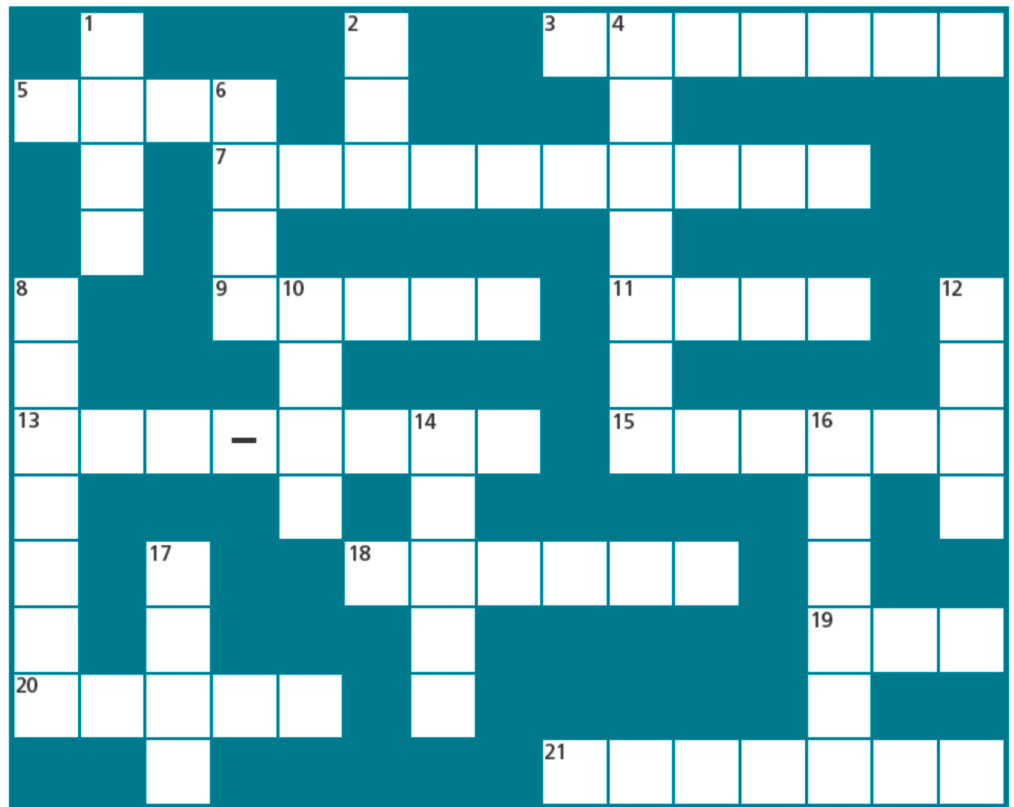


## MARINE DEBRIS COMES FROM MANY SOURCES

**ACROSS:**  
These litter items are generated by people on land such as beachgoers, picnickers, and those who improperly dump their trash.

**DOWN:**  
These litter items are generated by people at sea such as boaters, fishermen, and passengers on cargo or cruise ships.

**PARENTS CAN HELP!**  
(Answers on page 8)





# Learn to Be a Drain Brain!

**Unlock the Secret Message and Discover How You Can Become a Drain Brain!**

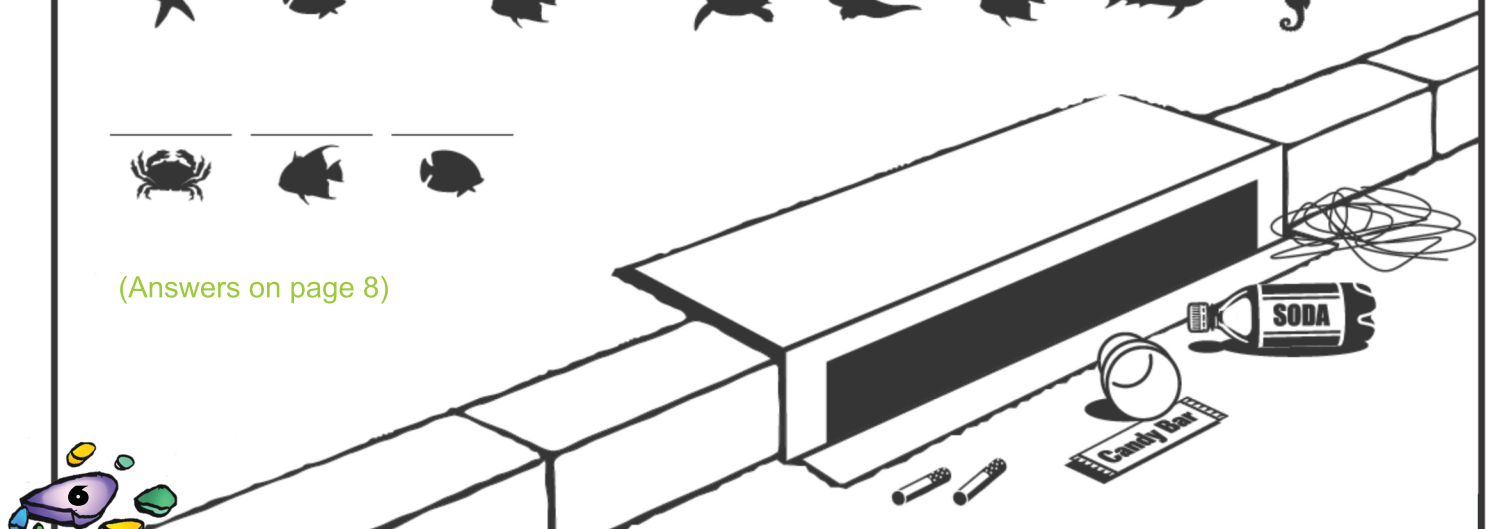
Have you ever wondered what those holes are at the edge of the sidewalk? They're called **storm drains** and they carry rain water off the street and into streams and rivers.

Soda bottles, paper cups, candy wrappers, cigarette butts and all of the trash in the street gets carried into storm drains with the rain water until it finally reaches the ocean and becomes debris.

Unlock the secret message by using the chart below to replace the shapes with the letters they match up with.

- = A
- = C
- = H
- = I
- = L
- = N
- = O
- = P
- = R
- = S
- = T
- = U
- = W
- = Y


(Answers on page 8)





# Make Your Own Recycled Bird Feeder



"Make a bird feeder  
From a big water jug  
Or find a new home  
For a slug in a mug."  
~The Flying Debris

## MATERIALS:

- Clean plastic soda bottle with cap
- Permanent marker
- Craft knife
- 2 wooden spoons
- Small eye screw
- Bird seed
- Twine for hanging

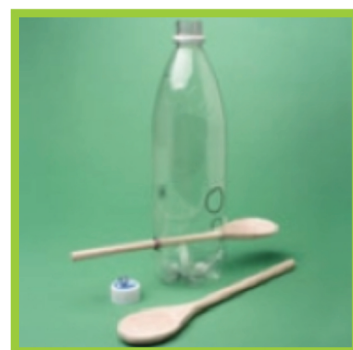
## INSTRUCTIONS:

**1.** Draw a  $\frac{1}{2}$  inch asterisk \* on the side of your plastic bottle, about 4 inches from the bottom. Rotate the bottle 90 degrees and draw another asterisk about 2 inches from the bottom. Now draw a 1-inch wide circle opposite each asterisk.

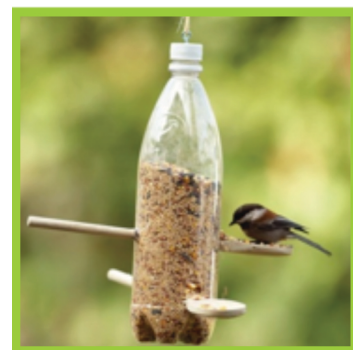
**2.** Have a parent slit the asterisk lines and cut out the circles using a craft knife. Insert a wooden spoon (handle first) through each hole and then through the opposite asterisk.

**3.** Remove the bottle cap and have a parent twist a small eye screw into the top of it for hanging.

**4.** Fill your bottle with bird seed, replace cap, and use twine to hang it from a tree branch.



**Steps 1 & 2**

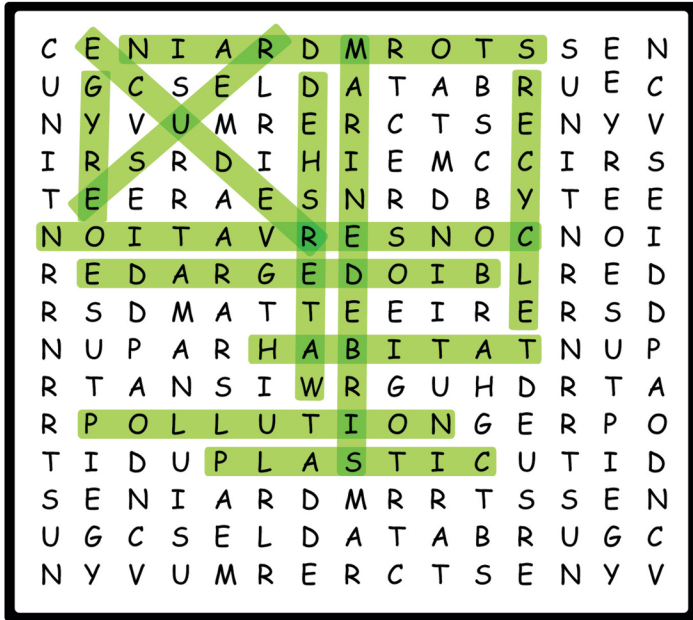


**Steps 3 & 4**

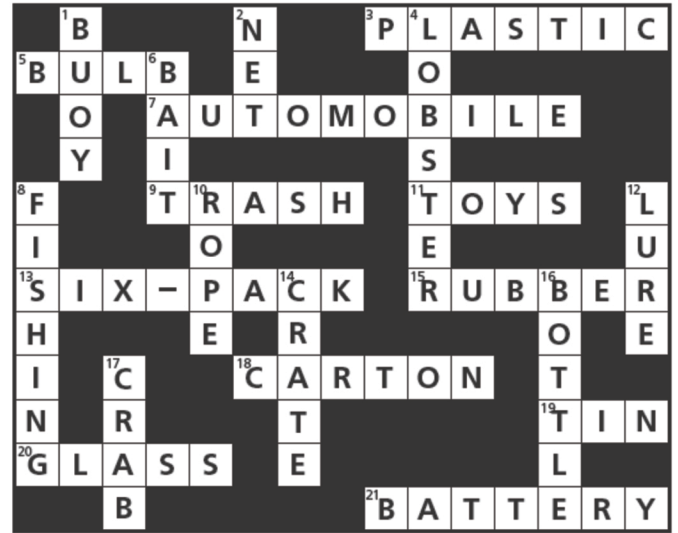


# ANSWER KEY

## pg. 2 Marine Debris Word Search



## pg. 5 Picture Crossword



## pg. 4 Marine Debris Scramble

### Answer

1. Styrofoam Cups
2. Fishing Line
3. Candy Wrappers
4. Plastic Bags
5. Helium Balloons
6. Bottle Caps
7. Beverage Cans

### Hidden message:

REDUCE, REUSE, RECYCLE

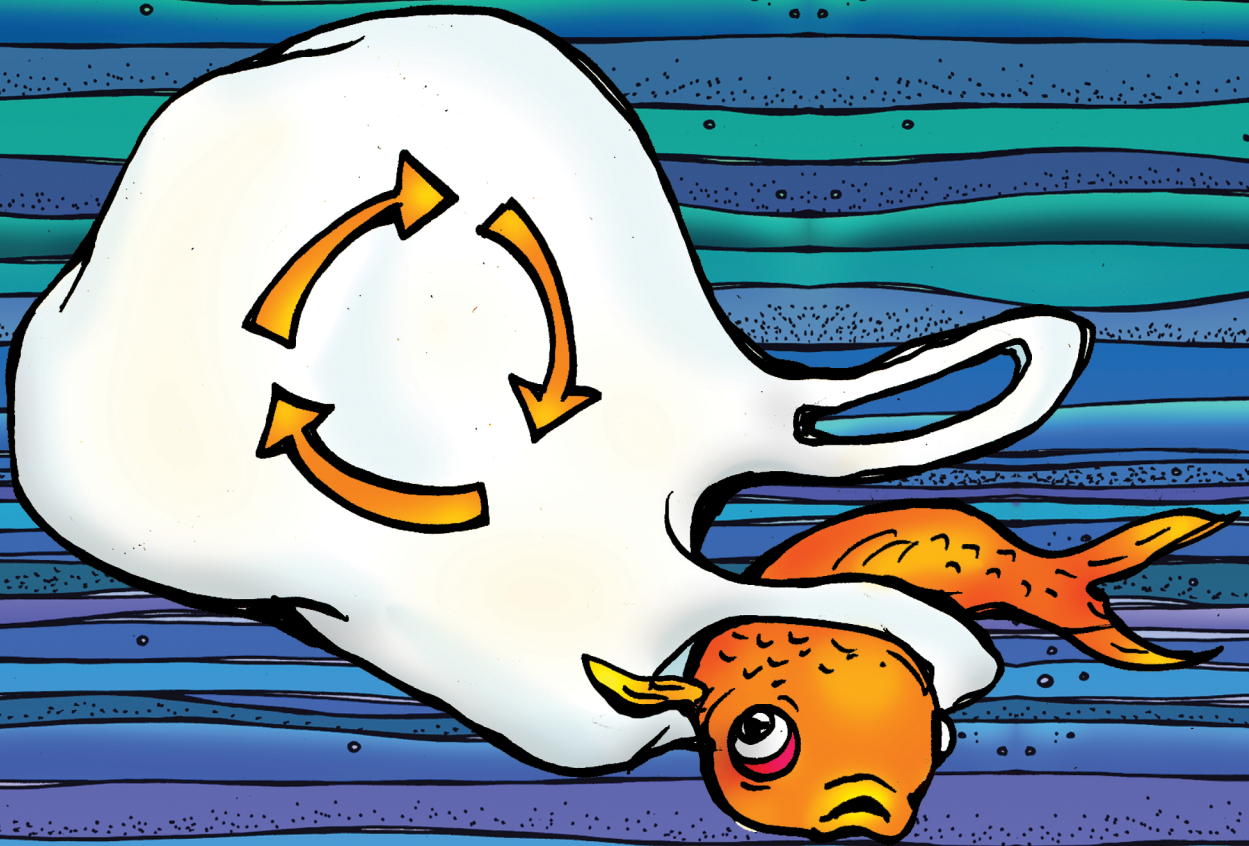


## pg. 6 Secret Code

ALWAYS PUT YOUR TRASH IN A TRASH CAN.







[www.marex.uga.edu](http://www.marex.uga.edu)

[www.georgiaseagrant.uga.edu](http://www.georgiaseagrant.uga.edu)