

# ARE YOU A FISH?

Educational Activity

**Grade Level:** Pre-K – Grade 1

Author:

**Rachel Wilson**

2019–20 Marine Education Fellow

## *Ocean Literacy Standards:*

**#5:** *The ocean supports a great diversity of life and ecosystems*

**#6:** *The ocean and humans are inextricably interconnected.*

This hands-on educational activity is designed to teach students the basic biological differences between fish and humans. Students will understand the internal and external anatomy of a fish through a hands-on craft. Using a homemade fish to understand the anatomy of many fish species, students will be able to compare the basic bodily functions of fish and humans.

## CONCEPTS AND SKILLS

- Basic differences between fish and human anatomy
- Comparing and contrasting



Marine Extension and  
Georgia Sea Grant  
UNIVERSITY OF GEORGIA



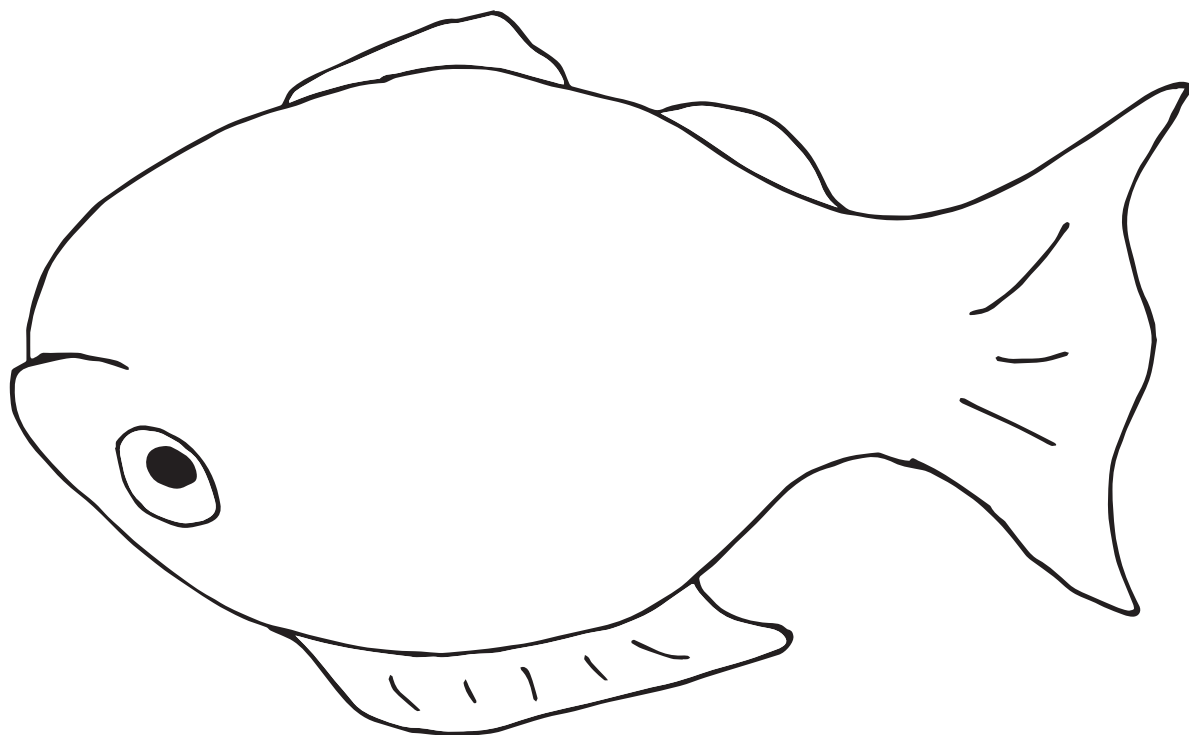
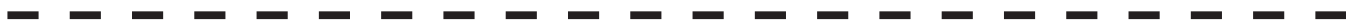
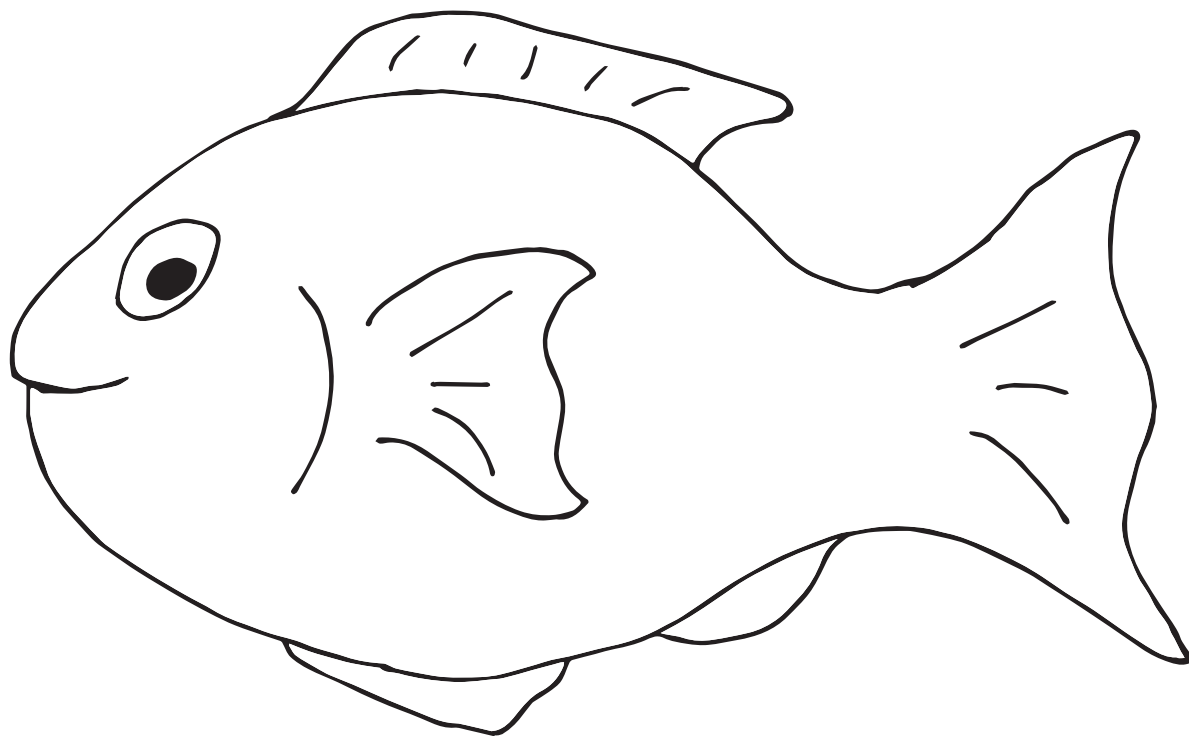
[gacoast.uga.edu](http://gacoast.uga.edu)

Published 2020

# ARE YOU A FISH?

Grade Level: Pre-K – Grade 1

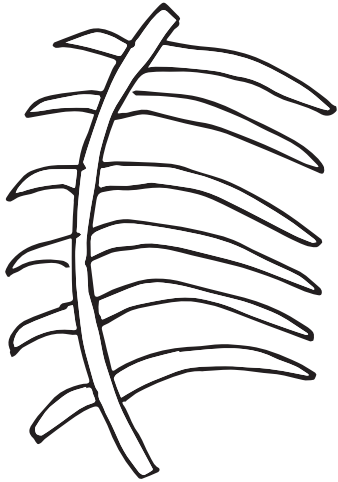
**Part 1: Make your own fish.** Print out fish template below. Fold along the dotted line and glue the sides of your fish together. Now cut the fish out.



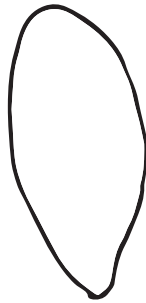
# ARE YOU A FISH?

Grade Level: Pre-K – Grade 1

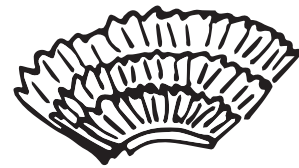
Next, print and cut out the pieces below. Glue these pieces to the side of your fish that does not have a fin, following the key below. Color your fish – be creative!



**BACKBONE AND RIBS**

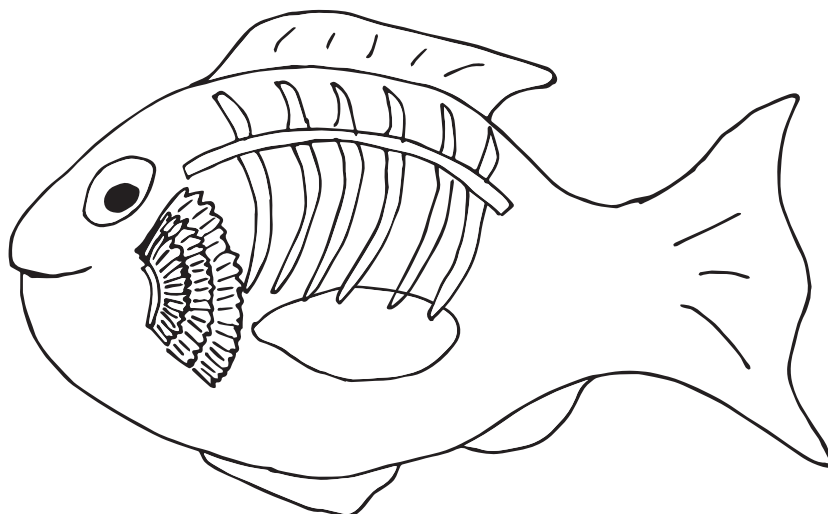


**STOMACH**



**GILLS**

## Key for internal fish structure



# ARE YOU A FISH?

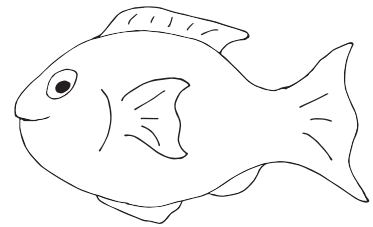
Grade Level: Pre-K – Grade 1

**Part 2: Compare and contrast.** Now that you've made your own fish, let's think about ways that you are like a fish. Answer the questions below and then look at the next page for the answer key.

**YOU**



**FISH**



\_\_\_\_\_

What body part is used to move?

\_\_\_\_\_

\_\_\_\_\_

What body part is used to see?

\_\_\_\_\_

\_\_\_\_\_

What body parts are used to eat?

\_\_\_\_\_

\_\_\_\_\_

Do they have bones?

\_\_\_\_\_

\_\_\_\_\_

What body parts are used to breathe?

\_\_\_\_\_

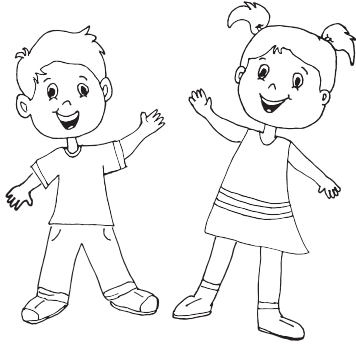
**Are you a fish?** (circle your answer)

YES / NO

# ARE YOU A FISH?

Grade Level: Pre-K – Grade 1

## YOU



Legs, feet, knees

---

Eyes

---

Mouth and stomach

---

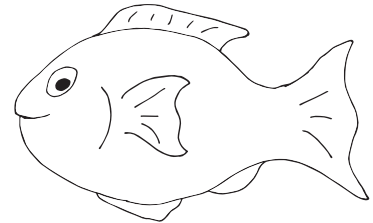
Yes

---

Lungs

---

## FISH



Fins and tail

---

Eyes

---

Mouth and stomach

---

Yes

---

Gills

---

What body part is used to move?

What body part is used to see?

What body parts are used to eat?

Do they have bones?

What body parts are used to breathe?

Are you a fish? (circle your answer)

YES

/

**NO**

You have some similarities with fish but, they live underwater all the time which means that fish have some different body parts than we do. Their gills help them to breathe underwater and their fins and tails allow them to be quick swimmers. Even their eyes are a bit different than yours as they help them see well underwater all the time.