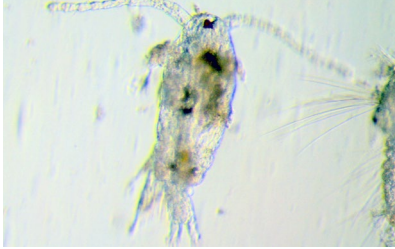


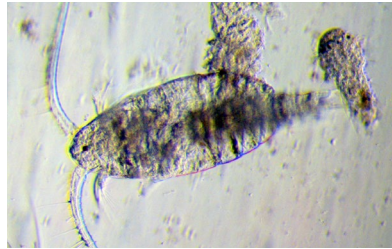
Zooplankton IDENTIFICATION GUIDE

Prepared by Emi Yamaguchi and Caitlin Bell (2007) (Rev. 2020)



Adult Copepod

Copepods are the most common zooplankton worldwide. They are an integral part of the food web as both predator and prey



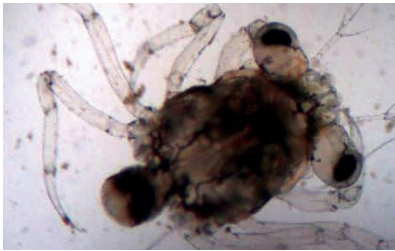
Copepod Nauplius

The nauplius is a common early larval stage of crustaceans. Some nauplii have spines.



Megalops

Final larval stage of a crab. During this stage, the abdomen is extended. It folds under the body as an adult.



Polychaete Worm Larvae

These are the marine relative of earthworms. The larvae are found in the plankton. The adult form is benthic



Zoea

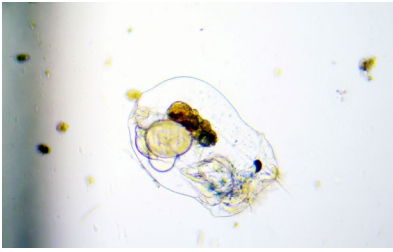
Larval stage of a crab or shrimp. They have two large spines used for protection and flotation.



Tunicate (sea squirt) larva

Early life stage of a tunicate. Related to humans because they have a notochord, although it disappears in adults. Adult forms are called sea squirts.





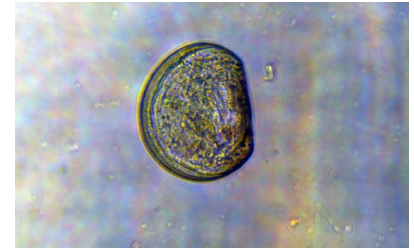
Rotifer

Rotifer cilia are in constant motion. Only a few species are found in marine or brackish water.



Fish Larvae

This juvenile fish will develop into a nektonic or benthic adult form. It is planktonic at this young stage.



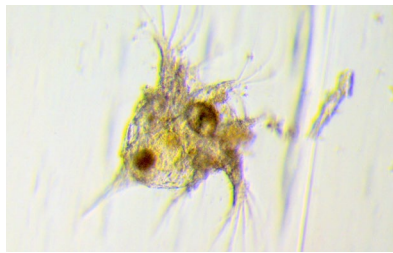
Veliger Larva

A free-swimming larval stage of a mollusk. They have the beginnings of a foot, shell and mantle. This is a veliger of a clam.



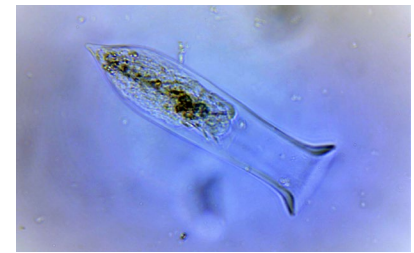
Cypris Larva

Final larval stage of a barnacle. It must find a suitable attachment site to become an adult.



Barnacle Nauplius

Distinguished from crab larvae by "spikes" on their heads. This stage comes before cypris stage.



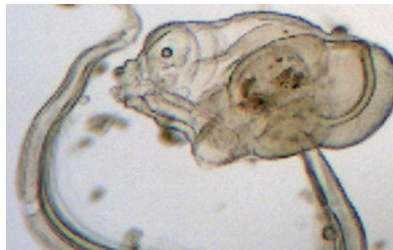
Tintinnid

Often referred to as a "tintinnid cup," it is a ciliate with a hard outer covering.



Hydroid Medusa

Medusa stage of a hydroid. It has stinging cells for defense and food capture. This stage reproduces sexually to form polyps. Polyps then reproduce asexually to produce the medusa form.



Adult *Oikopleura* sp.

Actually an adult tunicate with notochord and tail. The tail waves food to the mouth.

