



MEET THE LOCALS



Shrimp



Spot



Black Drum



Red Drum (Redfish)



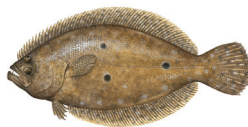
Blue Crab



Striped Mullet



Spotted Seatrout



Flounder



Atlantic Croaker



Whiting



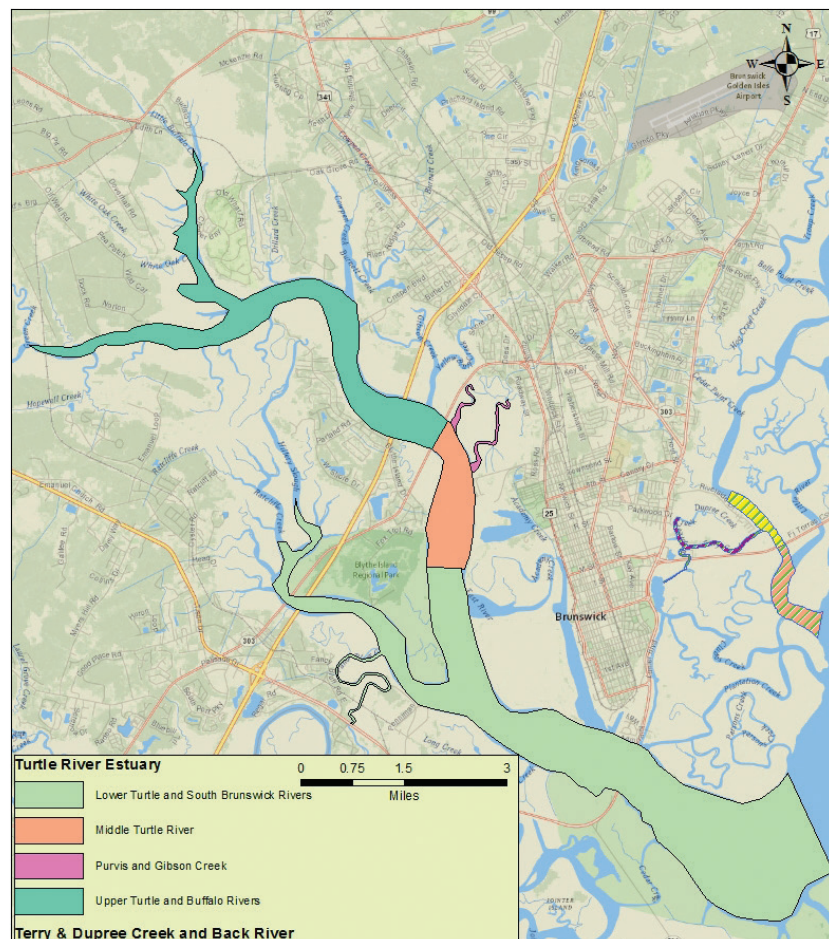
Sheepshead



Silver Perch



GLYNN COUNTY SEAFOOD CONSUMPTION ADVISORIES



TURTLE RIVER ESTUARY

Lower Turtle & South Brunswick Rivers (St. Simons Estuary)		
SPECIES	AREA SAMPLED	RECOMMENDATION
Atlantic Croaker, Spot, Striped Mullet, Sheepshead, Southern Kingfish (whiting), Spotted Seatrout	Turtle River (from Marker 9) and South Brunswick River (downstream to Dubignon and Parsons)	1 meal/week
Black Drum, Blue Crab, Red Drum, Shrimp, Southern Flounder		No Restrictions
Clams, Mussels, Oysters		Shellfish Ban*

Middle Turtle River (St. Simons Estuary)		
SPECIES	AREA SAMPLED	RECOMMENDATION
Atlantic Croaker, Spot, Striped Mullet, Southern Kingfish (whiting)	State Hwy 303 to Channel Marker 9	1 meal/month
Black Drum, Sheepshead, Blue Crab, Red Drum, Spotted Seatrout		1 meal/week
Shrimp, Southern Flounder		No Restrictions
Clams, Mussels, Oysters		Shellfish Ban*

Purvis & Gibson Creeks (St. Simons Estuary)		
SPECIES	AREA SAMPLED	RECOMMENDATION
Atlantic Croaker, Southern Kingfish (whiting), Striped Mullet	Purvis and Gibson Creeks	Do Not Eat
Spot, Spotted Seatrout		1 meal/month
Red Drum, Black Drum, Southern Flounder, Blue Crab, Sheepshead		1 meal/week
Shrimp		No Restrictions
Clams, Mussels, Oysters		Shellfish Ban*

Upper Turtle & Buffalo Rivers (St. Simons Estuary)		
SPECIES	AREA SAMPLED	RECOMMENDATION
Spot	Turtle and Buffalo Rivers, Upriver of Georgia Hwy 303	Do Not Eat
Atlantic Croaker, Striped Mullet		1 meal/month
Sheepshead, Southern Kingfish (whiting), Blue Crab, Red Drum, Spotted Seatrout		1 meal/week
Shrimp, Southern Flounder, Black Drum		No Restrictions
Clams, Mussels, Oysters		Shellfish Ban*

TERRY & DUPREE CREEKS & BACK RIVER

Dupree Creek		
SPECIES	AREA SAMPLED	RECOMMENDATION
Atlantic Croaker, Blue Crab, Red Drum, Southern Kingfish (Whiting), Spot, Spotted Seatrout, Striped Mullet	Dupree Creek to 0.5 mile below the junction with Terry Creek	1 meal/month
Silver Perch (Yellowtail)		1 meal/week
Shrimp		No Restrictions
Clams, Mussels, Oysters		Shellfish Ban*

Terry Creek		
SPECIES	AREA SAMPLED	RECOMMENDATION
Atlantic Croaker, Blue Crab, Red Drum, Southern Kingfish (Whiting), Spot, Spotted Seatrout, Striped Mullet	Terry Creek 0.75 miles above Back River to the Back River	1 meal/month
Shrimp		No Restrictions
Clams, Mussels, Oysters		Shellfish Ban*

Back River - North		
SPECIES	AREA SAMPLED	RECOMMENDATION
Atlantic Croaker, Blue Crab, Red Drum, Spot, Spotted Seatrout	Back River Above Terry Creek to Torras Causeway	1 meal/month
Striped Mullet		1 meal/week
Shrimp		No Restrictions
Clams, Mussels, Oysters		Shellfish Ban*

Back River - South		
SPECIES	AREA SAMPLED	RECOMMENDATION
Atlantic Croaker, Blue Crab, Red Drum, Spot, Spotted Seatrout, Striped Mullet	Back River from Torras Causeway to St. Simons Sound	1 meal/month
Shrimp, Southern Kingfish (whiting),		No Restrictions
Clams, Mussels, Oysters		Shellfish Ban*

*Shellfish Ban: National Shellfish Sanitation Program.
For information see Coastal Resources Division website: <https://coastalgadnr.org>

Includes all updates through 2022